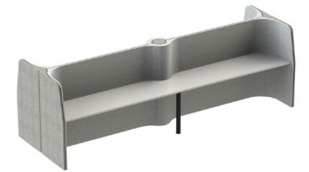
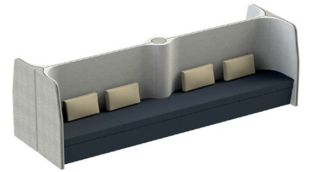


Keystone Picnic Soft Seating



Features

Picnic Table provides wide, spacious task desks for individual work or “duo” work-styles where people can work side-by-side for spontaneous collaboration for four to eight users.

Suitable for assigned seating or for mobile team members who need a spot to work but don’t require a dedicated desk.

Add short walls between the desks for more privacy. Seating can provide additional collaborative or drop-in meeting areas for managerial staff.

The soft, upholstered walls absorb noise common in today’s open-plan office and provide shelter from both visual and acoustic distractions.

Specifications

- Includes world-leading Phonix™ nanofibre technology for superior acoustic performance
- High resilience, commercial grade foam creates comfortable and inviting settings.
- Patented, custom wall connectors.
- Low-VOC furniture tested to the standard ANSI/ BIFMA M7.1.
- Sits on adjustable-height glides for easy levelling.
- Wall units are able to nest for efficient shipping.
- 5 year warranty.
- New Zealand

Dimensions

Size (mm):
2200L x 2200W x 1300H

Options

- Available in a variety of fabrics.
- Power/Data: Internally-routed cable management facilitates power and data solutions built into the work surface.
- Standard worktops available in Melteca (LPL) with edge-banding, Plytech Futura (European Birch HPL), or Plytech Spectrum Eco (Finnish Birch HPL).

Standard Melteca

