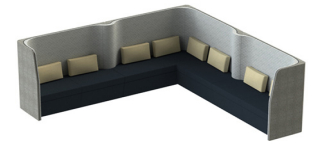
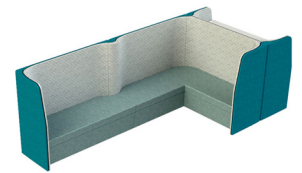


Keystone Banquet Seating



Features

Banquet offers a larger breakout space for open collaboration or socialising. Perfect for dining areas, the soft walls provide a level of acoustic privacy. Add in the adjacent standing desk providing a bar seating area for two informal meetings or task work. The unit can be scaled up or down depending on requirements. The soft, upholstered walls absorb noise common in today's open-plan office and provide shelter from both visual and acoustic distractions.

Specifications

- Includes world-leading Phonix™ nanofibre technology for superior acoustic performance
- High resilience, commercial grade foam creates comfortable and inviting settings.
- Patented, custom wall connectors.
- Low-VOC furniture tested to the standard ANSI/ BIFMA M7.1.
- Sits on adjustable-height glides for easy levelling.
- Wall units are able to nest for efficient shipping.
- 5 year warranty.
- Made in New Zealand

Dimensions

Banquet Corner:
Recommended for 4-6 users
3200L x 3200W x 1300H

Banquet Plus:
Recommended for 3-5 users
3850L x 1600W 1300H

Options

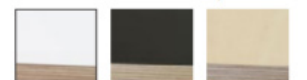
- Available in a variety of fabrics.
- Power/Data: Internally-routed cable management facilitates power and data solutions built into the work surface.
- Standard worktops available in Melteca (LPL) with edge-banding, Plytech Futura (European Birch HPL), or Plytech Spectrum Eco (Finnish Birch HPL).

Standard Melteca



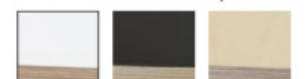
Snowdrift Seal Grey Sublime Teak

Futura HPL



White Black Finnish Birch

Spectrum Eco



White Black Finnish Birch