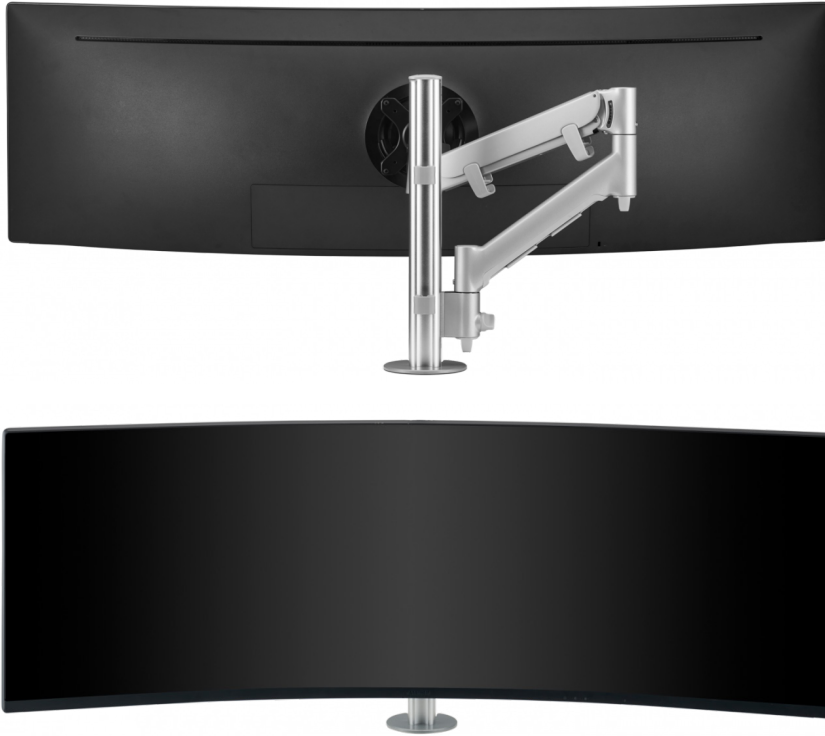


AWMS Heavy-duty Monitor arm



Features

The AWMS-HX40 is a heavy duty monitor arm attached to a 15.7" post. Its spring-assisted design with three points of articulation enables effortless adjustment from a seated position even for heavy displays. It supports monitors up to 35lb and will work well with any curved, large or all-in-one PC display.

Ideal for: Curved monitors, heavy and large display, and all-in-one PCs. Spring-assisted arm provides the ultimate in ergonomic support and allows the display to be adjusted effortlessly from a seated position.

Specifications

- Ergonomic spring-assisted movement for easy adjustment
- Small footprint
- Modular, adaptable and upgradeable design
- Sleek, supple design
- 20-degree tool-free monitor tilt adjustment
- Made of durable aluminum that can be easily recycled at the end of life
- Built-in optional arm rotation stopper to prevent interference with walls or desk partitions
- Choice of desk mounting options
- Advanced cable management
- Landscape to portrait monitor rotation
- Glare control & optimal viewing angle adjustment via tilt and pan capabilities
- Focal distance control

Dimensions

- Flat-screen monitors: maximum load up to 16kg per monitor
- Curved screen monitors: maximum load up to 12kg per monitor
- 75 x 75 or 100 x 100 VESA
- VESA compatibility can be extended to 200 x 100 or 200 x 200 using an AC-AP-2020 adapter plate (sold separately)
- Arm reach: 597mm

Options

- Available in Silver, Black or White finish